

# WHERE TO RIDE

## DENVER, CO



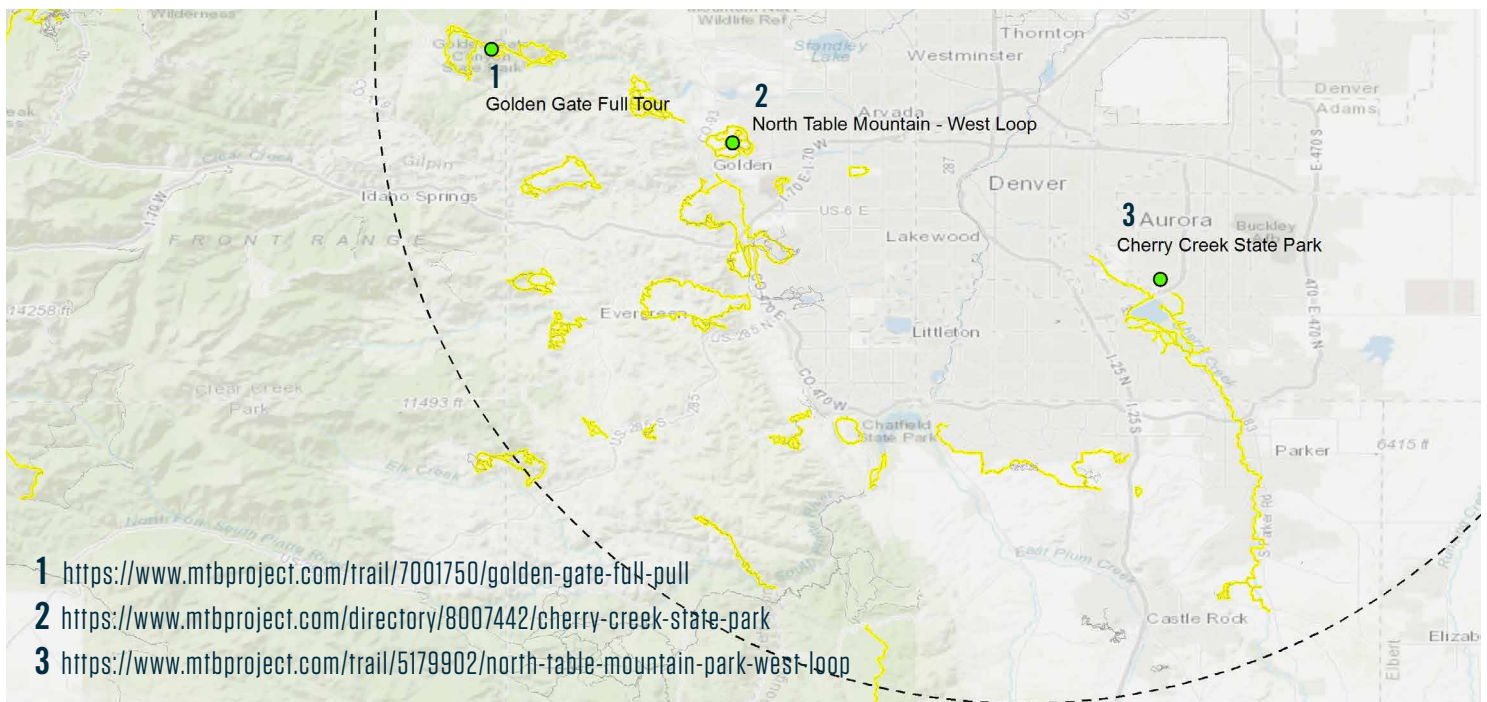
**COLORADO STATE PARKS** allows eMTBs in all 42 Colorado State Parks where bicycles are permitted (roughly 281 miles).

**1 GREAT RIDE** The Golden Gate State Park Full Pull is a 24.6 mile ride with 4,339' of elevation gain. The loop is a true mountain bike experience on most mostly singletrack with many challenging sections of rocks.

**2 GREAT RIDE** Cherry Creek State Park offers a variety of rides, with everything from point-to-point to loop options. Trails are a mix of easy-going paved trails with a few sections of dirt doubletrack and singletrack.

**JEFFERSON COUNTY OPEN SPACE AND TRAILS** is piloting a program that allows Class 1 eMTBs on all 338 miles of Jeffco Open Space-managed natural surface trails open to bicycles (Class 1 and Class 2 e-bikes are allowed on paved trails within the parks).

**3 GREAT RIDE** The North Table Mountain - West Loop is a 14.9 mile loop with 1,498' of elevation gain. The ride is mostly singletrack with some doubletrack, climbing and challenging trails.



1 <https://www.mtbproject.com/trail/7001750/golden-gate-full-pull>

2 <https://www.mtbproject.com/directory/8007442/cherry-creek-state-park>

3 <https://www.mtbproject.com/trail/5179902/north-table-mountain-park-west-loop>

## PLEASE FOLLOW THESE GUIDELINES FOR RESPONSIBLE eMTB RIDING

- » On federal, state, county and local trails, eMTB access varies significantly. When in doubt, ask your local land manager about access, since local land rules change frequently. Do not ride your eMTBS in areas where the local rules are unclear.
- » Generally speaking, any natural surface trail designated for both motorized and non-motorized use is open to eMTBs.
- » It is critical that eMTB riders ride legally and only on authorized trails to show that all mountain bikers are responsible users.

Find more great rides and eMTB resources at: [peopleforbikes.org/e-bikes](https://peopleforbikes.org/e-bikes)